

## Session 2 Extension Activity: Open a Pet Monster Picture

The new pet owner may want to see a picture of their pet.

Python has libraries with special functions. The `webbrowser` library has commands to display web-based documents such as images or web pages on the Internet.

Follow the instructions to add code to open a picture of the pet when a person finds a match:

CODE	PURPOSE
<code>import webbrowser</code>	get commands from the web browser library
<code>webbrowser.open("https://www.website.com/image.png")</code>	open an image file on the Internet

### Show a Pet Monster with Horns

1. Open `monster.py` in IDLE (Python).
2. Import the `webbrowser` library. Add the code to the first part of the program.

```
import webbrowser

#variables
place=('Pet Monster Rescue')
find=True
```

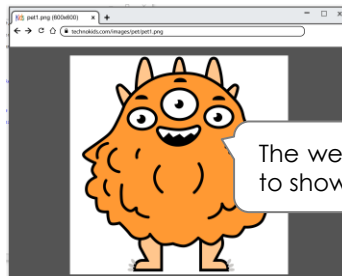
3. The first monster has horns. The web browser with a picture of this pet is:  
<https://www.technokids.com/images/pet/pet1.png>

Add the code: `webbrowser.open("https://www.technokids.com/images/pet/pet1.png")`

```
horns=input('Do you want a pet with horns? yes or no ')
if horns=='yes':
    print('We have a match!')
    print('It is Furchop. He likes to eat pizza and play ring toss.')
    webbrowser.open("https://www.technokids.com/images/pet/pet1.png")
    browser.close()
```

4. Test the program. When you are asked if you want a pet with horns, type **yes**.

```
Do you want a pet with horns? yes or no yes
We have a match!
It is Furchop. He likes to eat pizza and play ring toss.
```



5. Close the browser window. X

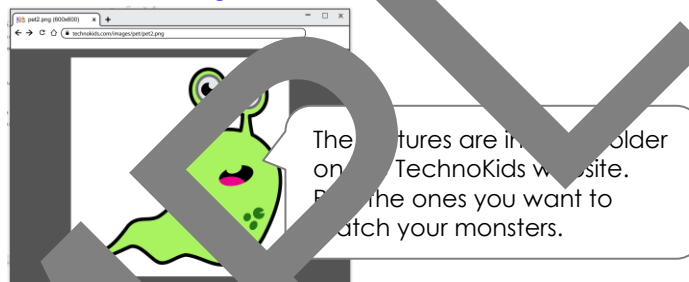
6. The second monster is not furry. The web address with a picture of this pet is:  
<https://www.technokids.com/images/pet/pet2.png>

Add the code: `webbrowser.open("https://www.technokids.com/images/pet/pet2.png")`

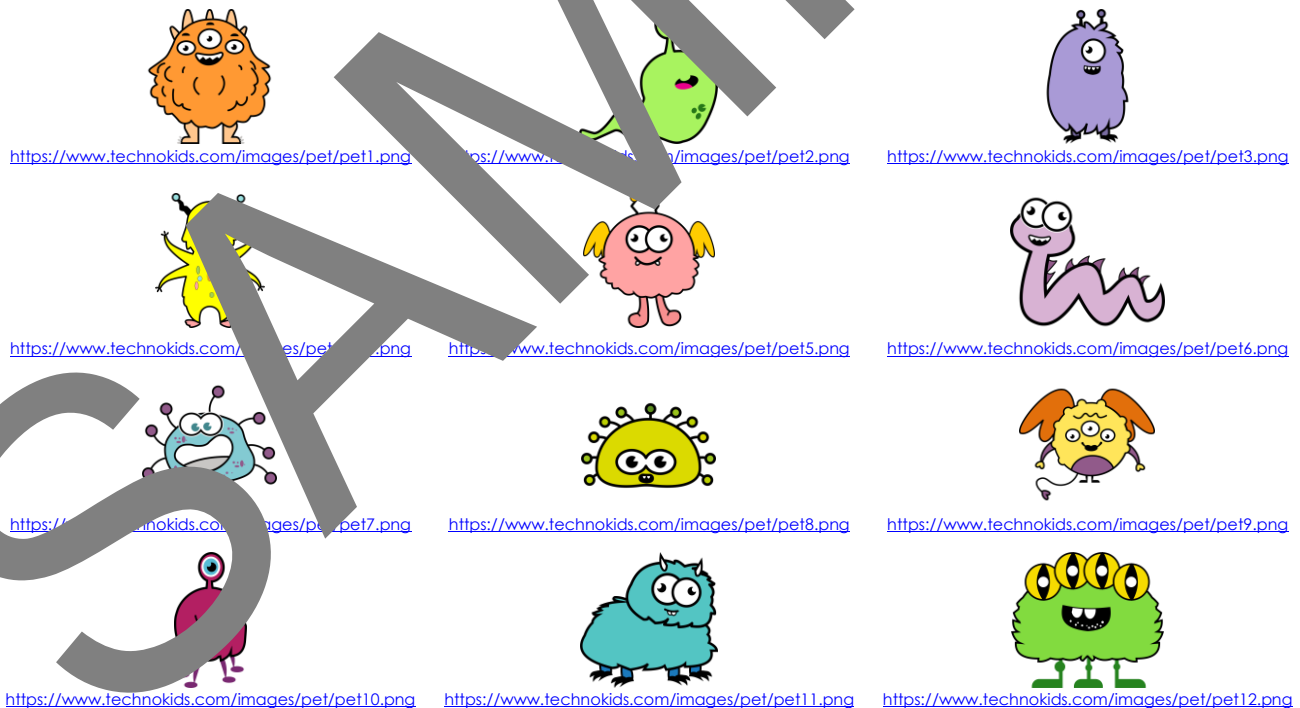
```
body=input('What type of body do you like? slimy, scaly, or furry? ')
if body!='furry':
    print('You answered', body+'.')
    print('We have a match. It is Slimo. He likes to eat bugs and swim in water.')
    webbrowser.open("https://www.technokids.com/images/pet/pet2.png")
    break
```

7. Test the program. When you are asked about the body, type **slimy**.

```
Do you want a pet with horns? yes or no no
What type of body do you like? slimy, scaly, or furry? slimy
You answered slimy.
We have a match. It is Slimo. He likes to eat bugs and swim in water.
```



8. Apply your skills to add a picture for each monster. Refer to the table below for the URL.



**Take the Challenge!** Add a time delay between the description and picture.

```
import time
time.sleep(5)
```

Where should this go? Start or end of the program?  
 Add this line for each pet monster.