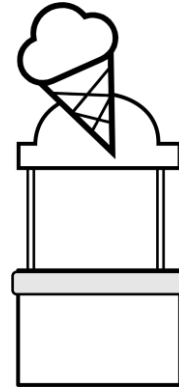


Session 2 Skill Review: Ice Cream Chart

You are the proud new owner of an ice cream cart. To help decide what flavors to have in the cart, you surveyed adults and children to find out what they liked. What flavors of ice cream should you have in the cart?

Use Google Sheets to organize the survey results and graph the data.

| SURVEY RESULTS | | | |
|---------------------|--------|----------|-------|
| Ice Cream Flavor | Adults | Children | Total |
| vanilla | 19 | 3 | |
| bubble gum | 0 | 8 | |
| butter pecan | 12 | 3 | |
| cookies and cream | 3 | 6 | |
| chocolate | 6 | 12 | |
| mint chocolate chip | 3 | 2 | |
| strawberry | 10 | 4 | |



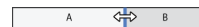
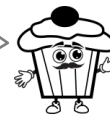
- Open Google Sheets.
- Add a title:
 - In **A1** type **Ice Cream Survey**. Press ENTER.
 - Select cells **A1**, **B1**, **C1**, and **D1**.
 - Click *Merge cells* to combine the cells.
 - Click *Horizontal align*.
 - Select *Center*.
 - Change the font size to **12**.
 - Apply the *Bold* style. **B**

- Type the survey headings into each cell:



| | | | |
|-------------------|------------------|--------------------|-----------------|
| A3 Flavors | B3 Adults | C3 Children | D3 Total |
|-------------------|------------------|--------------------|-----------------|

- Type each **Ice Cream Flavor** into a cell below the *Flavors* heading. Refer to the table above.

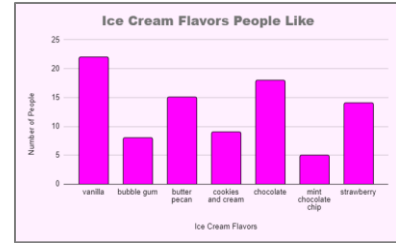
If the text is too wide for the cell, double click in between the column headings. This will fit the cell to the text.



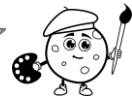
- Type the **number** of *Adults* and *Children* that like the flavor. Refer to the table above.
- Calculate the *Totals*:
 - In **D4**, click *Functions*. Σ Select **SUM**.
 - Select the cells to calculate the number of people that like the flavor. Press ENTER.
 - Use *Autofill* to copy the formula into the remaining cells in the *Total* column. **+**
- Make the data look great. **B** **A**

8. Make a column graph of the total number of people that like each flavor.
 - a. Select the Flavors (**A4:A10**) and Totals (**D4:D10**) using the CTRL key.
 - b. Click *Insert chart*. 
 - c. Select a *Column chart*. 

9. Edit the *Chart & axis titles*:
 - a. Label the *Chart title*, **Ice Cream Flavors People Like**.
 - b. Label the *Horizontal axis title*, **Ice Cream Flavors**.
 - c. Type the *Vertical axis title*, **Number of People**.



If you have time, use your skills to make the graph look great!



10. Resize  and move  the graph below the survey data.
11. Name the workbook **Ice Cream Survey**.

Questions about the Survey Results

Analyze the data and the graph to answer the questions.

1. Look at the data. What flavor of ice cream do adults like the most?
2. Look at the data. What flavor of ice cream do children like the most?
3. Look at the data. What flavor of ice cream do adults like least?
4. Look at the data. What flavor of ice cream do children like least?
5. Look at the graph. What flavor is liked the most?
6. Look at the graph. What flavor is liked the least?
7. If you can fit only five flavors into your cart, what ones will you choose?

Why did you choose these flavors?